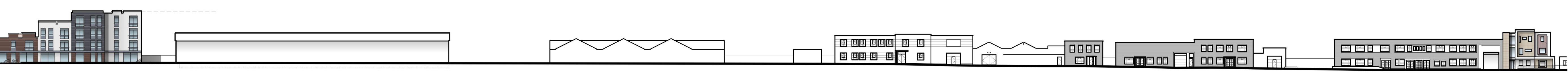


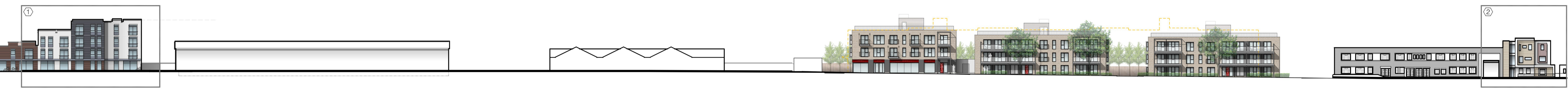
EXTENDED STREET SCENE KEY

① Recently approved scheme at 319-321 Sutton Road to erect three storey building comprising of 34 flats supported housing (class C2 use) with training subterranean garage and office, input vehicular access, car parking and amenity space 13/0018/FLUM.

② Recently approved scheme at 427 Sutton Road to demolish existing building and erect three storey building comprising of six flats with landscaping to rear, cycle storage and refuse storage 14/00029/FLUJ.



EXISTING EXTENDED STREET SCENE TO SUTTON ROAD
SCALE 1:500 @A1



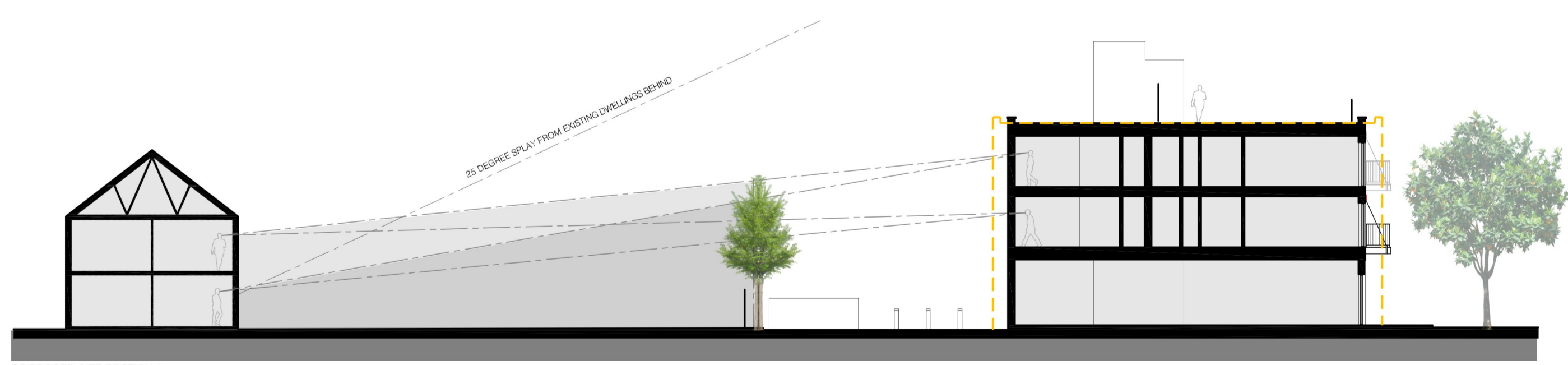
PROPOSED EXTENDED STREET SCENE TO SUTTON ROAD
SCALE 1:500 @A1



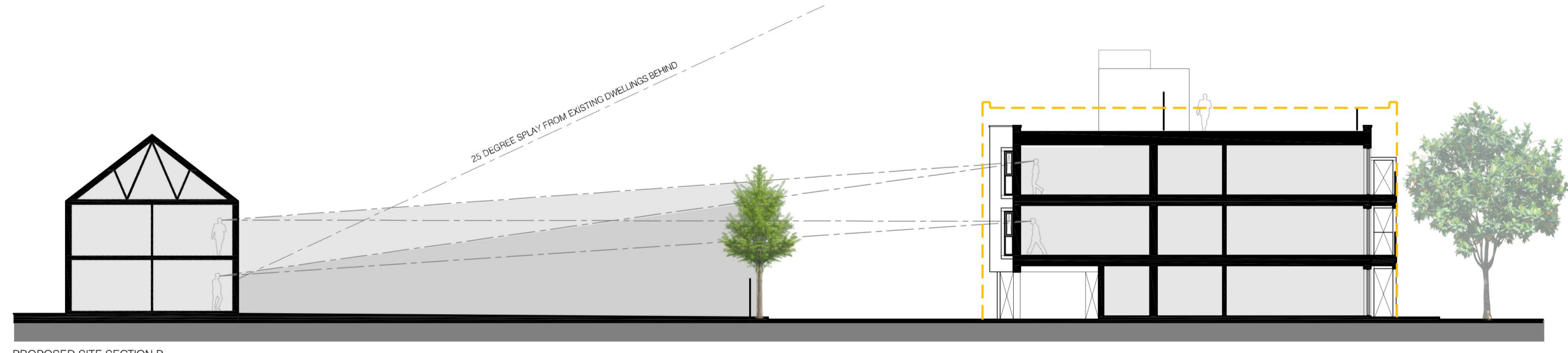
PROPOSED STREET SCENE TO SUTTON ROAD
SCALE 1:200 @A1



PROPOSED REAR ELEVATION TO PARKING COURT
SCALE 1:200 @A1



PROPOSED SITE SECTION A
SCALE 1:200 @A1



PROPOSED SITE SECTION B
SCALE 1:200 @A1

NO	01/07/2016	PLANNING ISSUE	MLL
REV	11/06/2016	PRELIMINARY ISSUE	DC
REV	DATE	AMENDMENT	DRAWN

PROJECT:
MIXED-USE REDEVELOPMENT
411-419 SUTTON ROAD,
SOUTHEND-ON-SEA,
ESSEX. SS2 5PH

DRAWING TITLE:
PROPOSED STREET SCENE ELEVATIONS AND SECTIONS

CLIENT:
DOVE JEFFERY HOMES

DRAWN:	PROJECT NO:	DRAWING NO:
DC	16.563	207
CHECKED:	SCALE:	
	1:200 @A1	REVISION:

DATE: 11.JUNE.2016 P2